



What is the GIRI Design Guide?

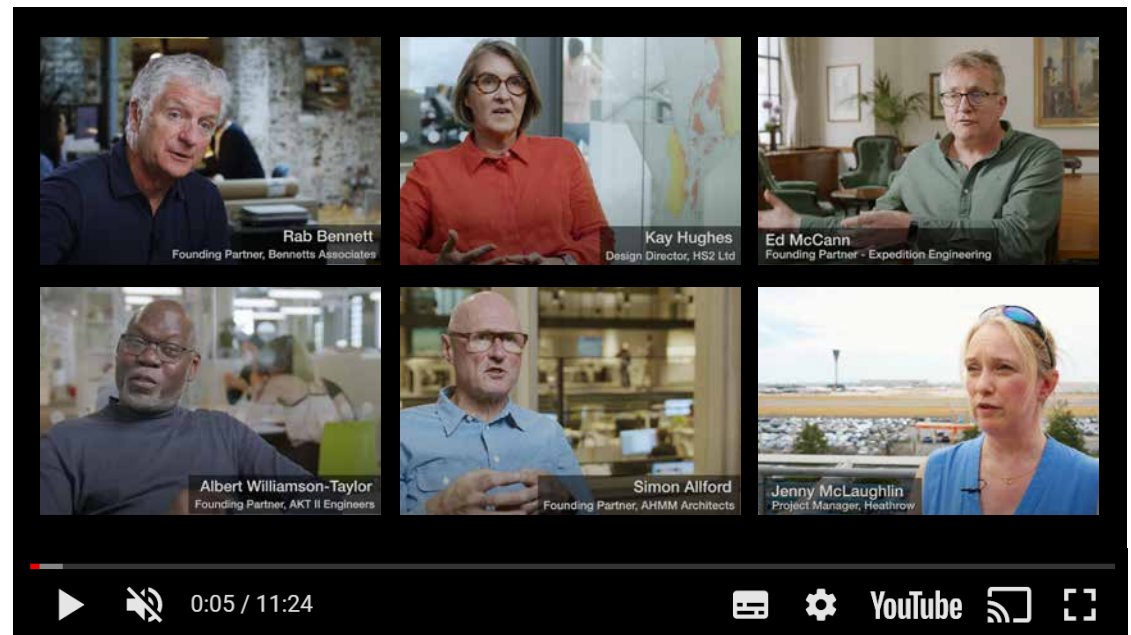
Research by the [Get It Right Initiative](#) established that a significant proportion of the weaknesses leading to errors in construction are rooted in the briefing and design processes.

The Get It Right Initiative is a not-for-profit membership organisation that is taking a multi-disciplinary approach to tackling avoidable error in the construction industry.

GIRI's early research identified the main types of errors, their causes, and their associated costs, so that effective methods could be developed to avoid errors and minimise their consequences.

The GIRI Design Guide is a best-practice document intended to instil in all parties an understanding of the importance of taking a robust approach to the design process. It shares a series of recommendations that can significantly reduce the occurrence of design error.

The key themes are set out below, and the full guide – endorsed by the ICE and RICS – is [available online](#).



Read the
Design Guide

Watch the
Design Guide video

Key themes

Culture

The delivery of construction projects is improved, and the number of errors reduced, when the right working culture exists; one that encourages collaboration, adaptive behaviour, inclusivity, leadership and good communication.

Investment

Providing sufficient resources – both time and fees – to complete the design properly is crucial. Early investment in design will more than repay itself by eliminating errors that could create problems later in the project.

Collaboration

A collaborative working environment establishes a teamwork approach to getting things right, and this is inextricably linked to culture. In a collaborative environment, team members do their best to help others to fulfil their responsibilities, and are open about areas where they themselves may need help.

Planning the design work

The project team should agree a framework for planning the design work and coordinating information, and the execution of the project should be developed on this basis. It is important to ensure all parties are fully aware of the framework and its requirements.

Brief

A well-prepared brief minimises design changes, and so reduces the knock-on construction errors and the associated cost increases and delays.

Information

Good quality, complete design information together with the clear communication of this information between the project team is an integral part of any successful project.

Stakeholder management

Stakeholder management is integral to the design and delivery of all projects.

Opening up and closing down

The concept of ‘opening up’ and ‘closing down’ a design enables all creative thinking and key decision-making to be completed in

good time, ahead of production information being prepared, eliminating or at least minimising subsequent changes.

Contractor input

All projects benefit from tapping into a contractor’s knowledge of delivery, buildability and construction techniques before design options are closed down. As a minimum the client should appoint a suitable contractor or specialist on a formal basis to consult with as the design develops.

Design gateways

If a comprehensive set of information is produced, reviewed and communicated effectively at established gateways, then the design is less likely to be misinterpreted and the potential for errors reduced.

Guiding the design process

Adopting a structured approach for the design process, from start to finish of the project, greatly reduces the risk of design errors. An individual with the authority to make informed decisions based on and aligned with cost and programme considerations should be assigned to manage the process.